

WHITE RIVER

1648 MVX JON \$2,999*

SPECIFICATIONS

Length	16' 1"
Beam	72"
Bottom width	48"
Max. recommended HP	40 HP
Max. person capacity	4 persons
Max. person weight	555 lbs.
Max. weight capacity	1055 lbs.
Interior depth	16"
Transom height	21"
Deadrise	.7 degrees
Hull material	.0100 5052 marine alloy
Approx. weight	587 lbs.
Approx. package weight	1209 lbs.

STANDARD FEATURES

COMFORT, CONVENIENCE & PEACE OF MIND

- 5-year hull warranty
- NMMA® certified
- Flotation meets or exceeds NMMA® & U.S. Coast Guard requirements
- Bow & stern eyes
- 4 tie-off cleats

CONSTRUCTION & EXTERIOR

- 100% aluminum, wood-free construction
- Thick .190 aluminum floor for added rigidity & a quieter ride
- 7° deadrise for a smoother, drier ride
- Welded-in, foam-filled interior side walls for quieter ride & structural strength
- Heavy-duty 1-piece, extruded aluminum gunnels for structural strength & rigidity
- Extruded bow chines for a stronger hull
- .100 5052 marine grade aluminum hull
- All-aluminum box-beam transom w/ corner braces—welded in to unitize & strengthen the hull

- Welded-in longitudinal stringer system for full-length support of the running surface
- Pressed-in strakes for structural strength & tracking stability
- Industry-exclusive, baked-on powder-coat finish (Forest Green) w/Sure Tread™ for long-lasting durability, color & good looks
- Available in optional Grassland or Woodland camo patterns (at additional cost)

FUNCTIONAL

- VERSATRACK® accessory-mounting channel in gunnels
- Trolling motor mounting surface along bow edge

INTERIOR

- Roomy front deck w/more space for fishing/hunting
- Bow & aft pedestal seat base locations
- Bow storage
- Sure Tread™ non-skid interior
- Grab handles

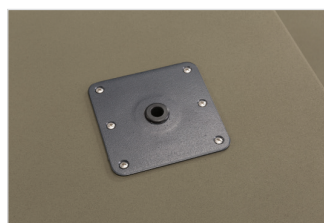
OPTIONAL FEATURES

TRAILER

- 14' (4.9 m) single-axle, custom-matched trailer \$1,245*



Photographs may be shown with optional equipment and/or aftermarket accessories.



Bow & aft pedestal seat bases



VERSATRACK® accessory-mounting channels



All-aluminum transom



Grab handles

*Actual dealer price may vary. See your authorized White River Jon Boat dealer for more details including tax, title prep and destination charges. All prices shown in U.S. Dollars.